

THIS INSTRUMENT PREPARED BY
LARRY BIRMINGHAM, P.L.S.
CARNAHAN & ASSOC., INC.
 ENGINEERS SURVEYORS PLANNERS
 6191 W. ATLANTIC BLVD., MARGATE, FLA.
 8706106 JANUARY, 1989 RCW

(A PORTION OF BOCA CHASE RIVIERA, P.U.D.)
BOCA CHASE - TRACT 8B-B
RECREATION AREA
 BEING A PORTION OF THE NORTHEAST ONE-QUARTER (1/4) OF
 SECTION 2, TOWNSHIP 47 SOUTH, RANGE 41 EAST
 PALM BEACH COUNTY, FLORIDA

88

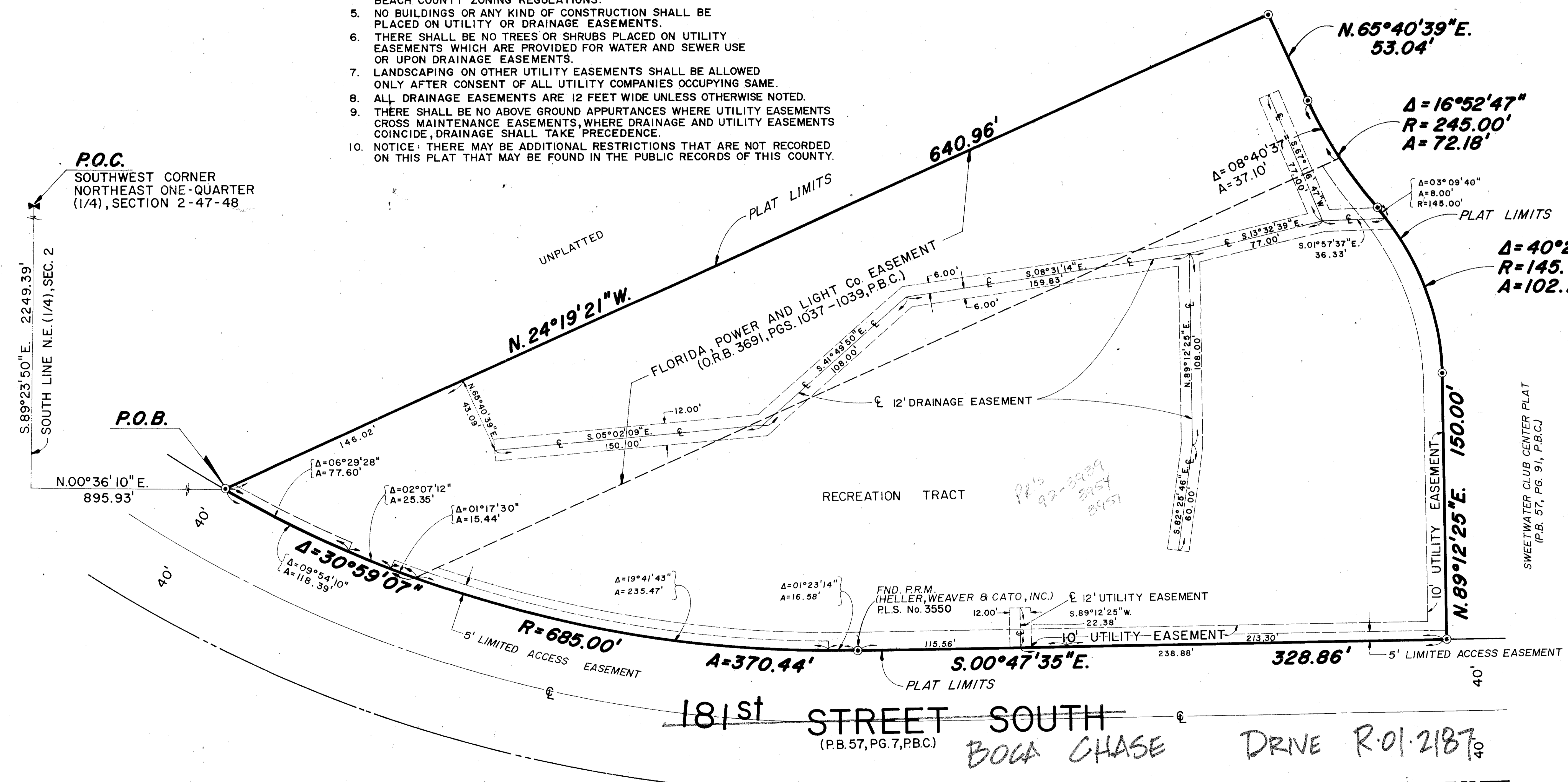
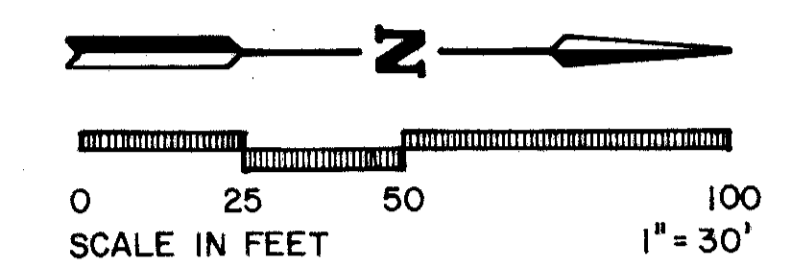
STATE OF FLORIDA
 COUNTY OF PALM BEACH

THIS PLAT WAS FILED FOR
 RECORD AT _____, THIS
 DAY OF _____, 1989, A.D.,
 AND DULY RECORDED IN PLAT
 BOOK No. _____ AT PAGES
 AND _____
 BY: **JOHN B. DUNKLE, CLERK**
 DEPUTY CLERK

LOCATION MAP
 NORTHEAST ONE-QUARTER
 SECTION 2-47-41 N.T.S.

SHEET 2 OF 2 SHEETS

- NOTES**
- INDICATES PERMANENT REFERENCE MONUMENT (P.R.M.) ©
 - ALL P.R.M.'s BEAR THE REGISTRATION NUMBER 4020.
 - BEARINGS SHOWN HEREON ARE BASED ON THE SOUTH LINE OF THE NORTHEAST ONE-QUARTER (1/4) OF SECTION 2-47-41 (SAID BEARING BEING SOUTH 89°23'50" EAST).
 - BUILDING SETBACK LINES SHALL BE AS REQUIRED BY PALM BEACH COUNTY ZONING REGULATIONS.
 - NO BUILDINGS OR ANY KIND OF CONSTRUCTION SHALL BE PLACED ON UTILITY OR DRAINAGE EASEMENTS.
 - THERE SHALL BE NO TREES OR SHRUBS PLACED ON UTILITY EASEMENTS WHICH ARE PROVIDED FOR WATER AND SEWER USE OR UPON DRAINAGE EASEMENTS.
 - LANDSCAPING ON OTHER UTILITY EASEMENTS SHALL BE ALLOWED ONLY AFTER CONSENT OF ALL UTILITY COMPANIES OCCUPYING SAME.
 - ALL DRAINAGE EASEMENTS ARE 12 FEET WIDE UNLESS OTHERWISE NOTED.
 - THERE SHALL BE NO ABOVE GROUND APPURTANCES WHERE UTILITY EASEMENTS CROSS MAINTENANCE EASEMENTS, WHERE DRAINAGE AND UTILITY EASEMENTS COINCIDE, DRAINAGE SHALL TAKE PRECEDENCE.
 - NOTICE: THERE MAY BE ADDITIONAL RESTRICTIONS THAT ARE NOT RECORDED ON THIS PLAT THAT MAY BE FOUND IN THE PUBLIC RECORDS OF THIS COUNTY.



SUBDIVISION: Boca Chase Riviera
 BOOK: 64 PAGE: 87
 PLAT: 88
 QUAD: 47
 PUD NAME: Boca Chase
 TAZ: 829

0303-002

BOCA CHASE - TRACT 8B-B REC. AREA 6/4/85